

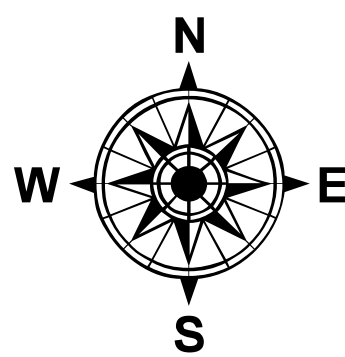
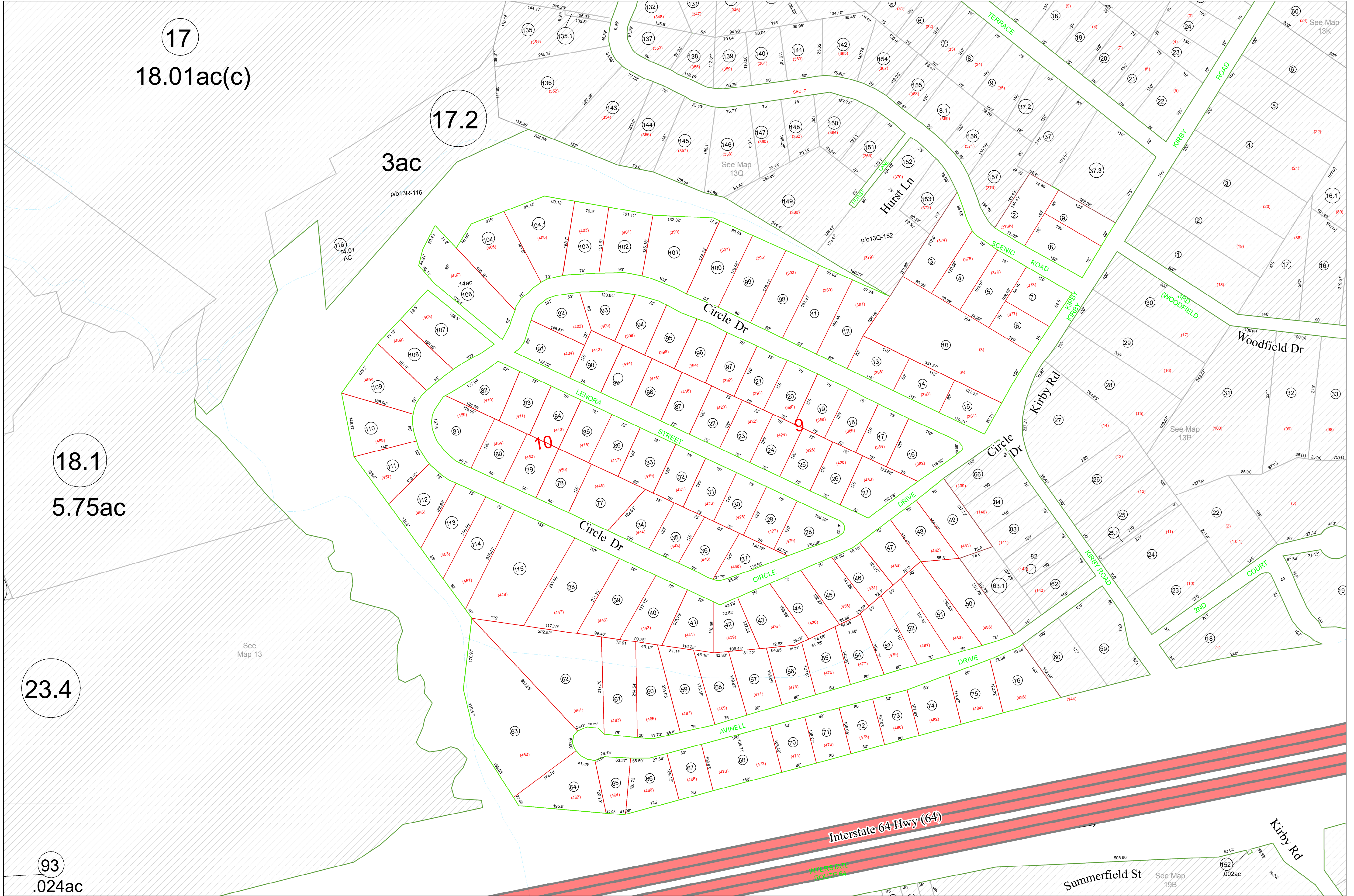
03-013R

03-0013

03-0013

03-0013

03-0013



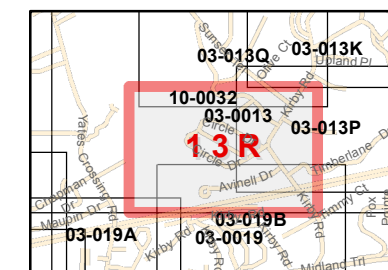
Last Revised on: 6/11/2015

THIS DOCUMENT IS A TAX MAP: It was compiled for purposes of taxation from available record evidence and has not been field verified. It is not a valid survey plat. The existence of data on this map does not imply any "official" status to such data. The Cabell County Assessor's Office assumes no liability that might result from the inappropriate use of this document. JB/Mapper

Restrictions: All tax maps created under the provisions of reappraisal legislation are the property of the Assessor of Cabell County, West Virginia and the reproduction, copying, modification, distribution, or sale of such tax maps or any copies thereof without the written permission of the Cabell County Assessor is prohibited by law.

Office of the  
Cabell County Assessor  
Irv Johnson, Assessor

Legend:  
Roadway Right of Way  
Private Roads  
Active Lot Lines  
Former Lot Lines  
Parcel ID's  
Political Lines  
River/Creek/Stream  
Railroad  
City Block Numbers  
Lot Numbers



Grant District (13R)